

STUDENT ELIGIBILITY REQUIREMENTS FOR ONLINE AUDITORY PROCESSING ASSESSMENT

1 AGED 5 - 65 and lives in Australia

Our service is for people who live in Australia and is normed for ages 5 - 65.

Children aged 5 - 7 will complete a slightly shorter test which excludes a few tasks that aren't applicable for younger kids.

Not all students in this age range will be able to follow the test instructions. Students should meet the requirements below to get a valid test result.

If you are over 65 you can still do this assessment. Your results will be compared with a group of 65 year olds. As the test has only been normed for people between the ages of 6 and 65, you won't be able to receive an APD diagnosis, but you'll still receive a comprehensive report detailing strengths and weaknesses and management and treatment options.

2 HAS ACCESS TO A SUITABLE iPad with 3.5mm jack or Apple adaptor

You'll need an Apple iPad that is generation 4 or above (approx. less than 8 years old). You can't use an Android tablet, it must be an iPad. If you don't have an iPad, perhaps you can borrow one from a friend.

If your iPad doesn't have a 3.5mm jack, you'll need an Apple branded adaptor (available from most electronics stores for \$15 - please only use the official Apple branded adaptor).

2 HEARING WITHIN NORMAL LIMITS

Children

When a student is showing difficulties with listening, the first essential step is a hearing test to rule out hearing loss. This is conducted by an audiologist with specialised equipment. Contact your local audiologist to enquire (you can even do this while you're waiting for your test headphones to arrive).

If the student has a history of ear infections, their hearing levels will fluctuate day-to-day. In this instance, you want to make sure that hearing is normal on the day the auditory processing assessment is administered. Do the assessment on the day of, or the day after, a normal hearing test result.

Adults

Adults can usually complete a free hearing screening at their local Spec Savers shop. Take a picture of your results and send it to us when you're done.

3 RECOGNISES NUMBERS 1 - 10 (8+ years only)



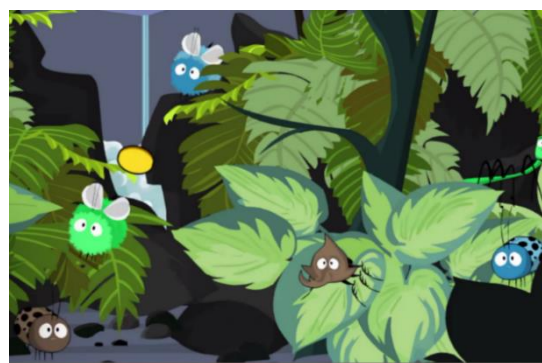
This only applies to people aged 8 and above (ages 5- 7 are given colours only).

Students need to remember sequences of numbers. So for example, the student might hear “2, 6” and must click the correct birds.

4 UNDERSTANDS COLOUR WORDS

Some tasks require the student to identify animals based their colour. The vocabulary used in this task is:

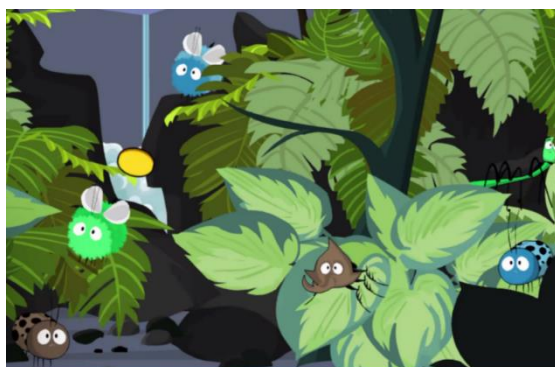
Brown, green, blue, white, blue, red, pink, grey



4 UNDERSTANDS DESCRIPTIVE WORDS (8+ years only)

This only applies to people aged 8 and above (ages 5- 7 are given colours only). One of the tasks requires the student to identify animals based their colour and features.

Vocabulary used: dotty, stripey, slimy, fluffy, skinny, spiky.



5 CAN TOLERATE HEADPHONES



We'll send you specialised headphones for the assessment (they are yours to keep).

The student needs to be able to tolerate wearing headphones for 30 minutes to participate. The assessment is calibrated to these specific headphones so they must be used.

6 CAN PAY ATTENTION FOR 20-30 MINUTES

The assessment games take about 20 minutes for children under 7, and 30 minutes for children 8 and above. Short breaks can be taken if needed, but the student does need to be able to pay attention to the instructions otherwise they won't be able to complete the tasks and the result will not be reliable.

Here is an example of an instruction given during the assessment.



If you hear the bird whistle on this side, then tap this bird.

If you hear the bird whistle on this side, tap this bird.

Sometimes it's going to be soft, so listen really hard.

Note: this game does not use the words "left" and "right" so students do not need to understand those concepts.

7 ABOUT MULTIPLE DIAGNOSES

People with existing diagnoses can still participate in the assessment if they fit the above criteria. It's important to note however that someone with a higher order cognitive primary diagnosis (e.g. intellectual delay or autism) cannot be diagnosed with Auditory Processing Disorder. However, assessment is still important, as it can identify strengths and weaknesses which will allow the student to access treatment options.