

Dear parent/participant,

Thank you for your interest in TALi attention training. This program is unique! How so?

- ▶ **Designed by researchers and psychologists** – TALi is designed by researchers and psychologists at Monash University in Victoria, Australia. These programs use a **scientifically proven approach** to helping students quickly improve learning skills.
- ▶ **Researched and clinically proven** – TALi is proven to improve attention in kids, with and without learning disabilities. Visit talihealth.com.au/research to see for yourself.

If you're committed to improving attention skills, this individualised, adaptive, targeted and intensive program is for you. You can enrol at soniclearning.com.au/talienrol or call us on **1300 135 334**. We look forward to working with you.

Sincerely,

The Sonic Learning Team



What is TALi?

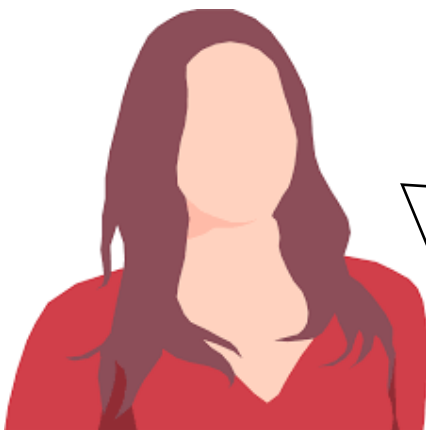
The TALi program contains 2 components:

1. **TALi DETECT:** an attention assessment that measures children’s abilities across three core areas (selective attention, sustained attention and executive attention).

When you do TALi DETECT with Sonic Learning, you’ll get the assessment and report (usually \$20) free of charge.

2. **TALi TRAIN:** a fun tablet-based training program clinically proven to improve attention skills.

Sonic Learning have almost 20 years’ experience providing online learning programs to families across Australia. When you do TALi TRAIN with us, you’ll receive professional telephone and email support from a Sonic Learning speech pathologist. This means you’ll get top quality support, save on travel time and won’t pay for expensive in-clinic visits.



When we first started playing TALi TRAIN, Jake really loved it and was always keen to play. Weeks 3 & 4 were a bit harder to get him motivated but once he started he was fine. What I loved most about TALi TRAIN was how much it would calm him down after school, which helped with his behaviour in the evening. Jake flourished at school during the 5 weeks of TALi TRAIN and was often given ‘star of the day’ in class because of how attentive he was being. Overall, I would highly recommend the program to any school age child struggling to pay attention.

Deana — Parent of Jake, 7 years old

What's included in this course

- ✓ **TALi TRAIN**

Access to a 5 week intensive attention training program, via the TALi TRAIN app (20 mins/day, 5 days/week).

- ✓ **Professional support**

You won't be doing this alone. TALi is a professionally supported program, and you'll have your own designated health or education professional to guide you through the program with 5 weekly support calls.

- ✓ **Additional resources**

Resources to help you plan the training and motivate your child.

- ✓ **Post-training assessment**

After completing the 5-week course, your child will have access to post-training attention assessments, so you can see their gains.

- ✓ **Post-training assessment report**

Pre and post-training results report to track your child's progress

- ✓ **Certificate of completion**

You've both worked hard, let's celebrate that!

TALi TRAIN Exercises

TALi TRAIN is how we improve attention. It contains 4 exercises, each building a core attentional skill, to target networks in the brain to improve attention.



Selection

Skill trained: Selective attention

Shut out distractions and decide what's important.



Control

Skill trained: Attentional Control

Choose what to attend to and what to ignore.



Inhibition

Skill trained: Impulse control

Teaches the skills to avoid acting impulsively.



Focus

Skill trained: Sustained attention

Focus on the task at hand for a longer period of time.

Enrolment fees

- ✓ Only \$499
- ✓ **Choose** to pay the enrolment fee **upfront** or in **2 monthly instalments**
 - **Upfront payment option:** One payment of \$499
 - **Direct debit payment plan option:** Two payments of \$249.50 (plus a once-off \$20 debit setup fee)
 - **NDIS participants:** Contact us to set up NDIS friendly billing for your course.
- ✓ **Sibling discounts:** You'll receive a 10% discount on both enrolments when you enrol two students and a 15% discount on all enrolments when you enrol 3 students (must be enrolled at the same time).



Enrol at

soniclearning.com.au/talienrol

or call 1300 135 334



Watch video at

soniclearning.com.au/tali

Frequently Asked Questions

What age is TALi TRAIN attention training suitable for?

Generally, anyone aged 3 and above can enrol in TALi. Suitability will depend on the individual student's skill level and our team can provide advice. If you are unsure about your child's suitability for the program please contact us at info@soniclearning.com.au or 1300 135 334.

Can I use my NDIS funding?

As these programs are delivered by health and education professionals, we can provide NDIS-friendly billing for self-managed and plan-managed NDIS participants. If you're NDIS funded, call or email us and we'll arrange everything you need to get started.

What other programs does Sonic Learning offer?

We're committed to offering the best online learning programs available, including:

- ▶ [NDIS programs](#) – designed specifically for NDIS participants, this program includes all our other programs as well as premium support and NDIS friendly billing.
- ▶ [Fast ForWord](#) – trains the skills needed for effective learning: auditory processing, auditory memory, attention, sequencing, and comprehension.
- ▶ [Reading Boost](#) – supercharge your reading comprehension skills while also building your memory.
- ▶ [Reading Assistant](#) – an online reading tutor that listens to students read aloud. This program mainly targets reading fluency.
- ▶ [3 Step Reading Program](#) – this combines Fast ForWord, Reading Boost and Reading Assistant programs for a comprehensive approach to improving reading.
- ▶ [Cogmed](#) – trains auditory and visual working memory in children, teenagers and adults.

See www.soniclearning.com.au > *programs* for more information.

When does the course begin and end?

TALi TRAIN will begin when you log in and do your first session and end 5 weeks later. It's a good idea to start on a Monday so you can plan the training. Once you're finished, you'll spend an extra session completing the post-assessment.

What technology do I need?

TALi can be used on iOS 8.0 or higher, running on iPad (4th, 5th and 6th generation) and iPad Pro (1st and 2nd generation). Android tablets must be running Android 8.1 (Oreo) or higher. You cannot use TALi on a phone. Check <https://www.talihealth.com.au/device-support> for device compatibility. Headphones are recommended to help the student concentrate (we recommend stereo headphones that cover the whole ear). Parents monitoring their children should use a headphone double adaptor so they can also hear the sound.